

# Global Climate Change Alliance Plus (GCCA+) Scaling Up Pacific Adaptation (SUPA)

*Learning from the past,  
preparing for the future*



**COASTAL  
PROTECTION**

**2<sup>nd</sup>**  
Segment

## GCCA+ SUPA Output 1: Practice Learning Series

12th-13st April 2022  
Hosted by SPREP via Zoom



**Patrick Saki Fong**  
Technical consultant

*"The light version of the impacts  
analysis methodology (Day 1)"*



**Fuka Kitekei'aho**  
National consultant

*"Impact assessment tools tested along  
the Tongatapu coastline (Day 2)"*

## Segment 2: IN SUMMARY

**Topic:** Impacts Analysis (iA) methodology  
**Focus sector:** Coastal Protection  
**Country:** Tonga

**Attendance:** 32 participants  
**Gender Ratio:** Men 12, Women 20

Light Version Impact assessment tools:	Interest level (No. of participants showing interest)
Impact checklist – checklist rating	3
Field observation	1
Traditional knowledge meeting and field assessment	1
Adaptation profiles	1
Focus group discussion	4
Climate change profiles	2
Spatial mapping – change detection & analysis	1

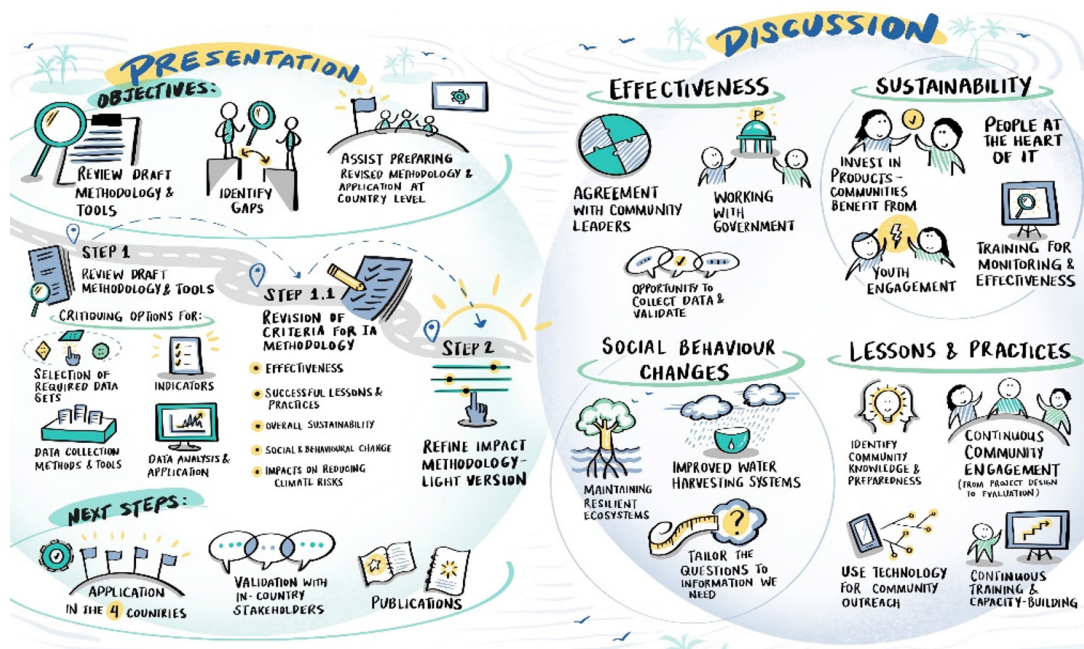
# Background of participants:

Representation of participants	Field of practice
Tonga, Fiji, Samoa, Cook Islands, FSM, Palau, Kiribati, Tuvalu, Vanuatu, Republic of Marshall Islands, Nauru, Niue	Environmental data analysis, Project coordination, Consultancy, Student, Community Research, Impacts analysis, Project implementation, Food and Agriculture, Climate traditional knowledge, Socioeconomic coordination, Climate change adaptation, NDC Hub Technical advisory, Program management, Community development

**Participants' impressions:** Helpful, Informative, engaging, Methodology is evolving, Strengthening Monitoring & Evaluation process, Strengthen community engagement

## Day 1: Presentation and Breakout Room Discussions

- How is each element of the methodology criteria applied in your line of work?



## Day 2: Presentation and Breakout Room Discussions

- Reflecting on the Tonga experience, were there any limitations to the tool(s)?
- Are these tools applicable to your area of work? If yes, how would you apply them?

