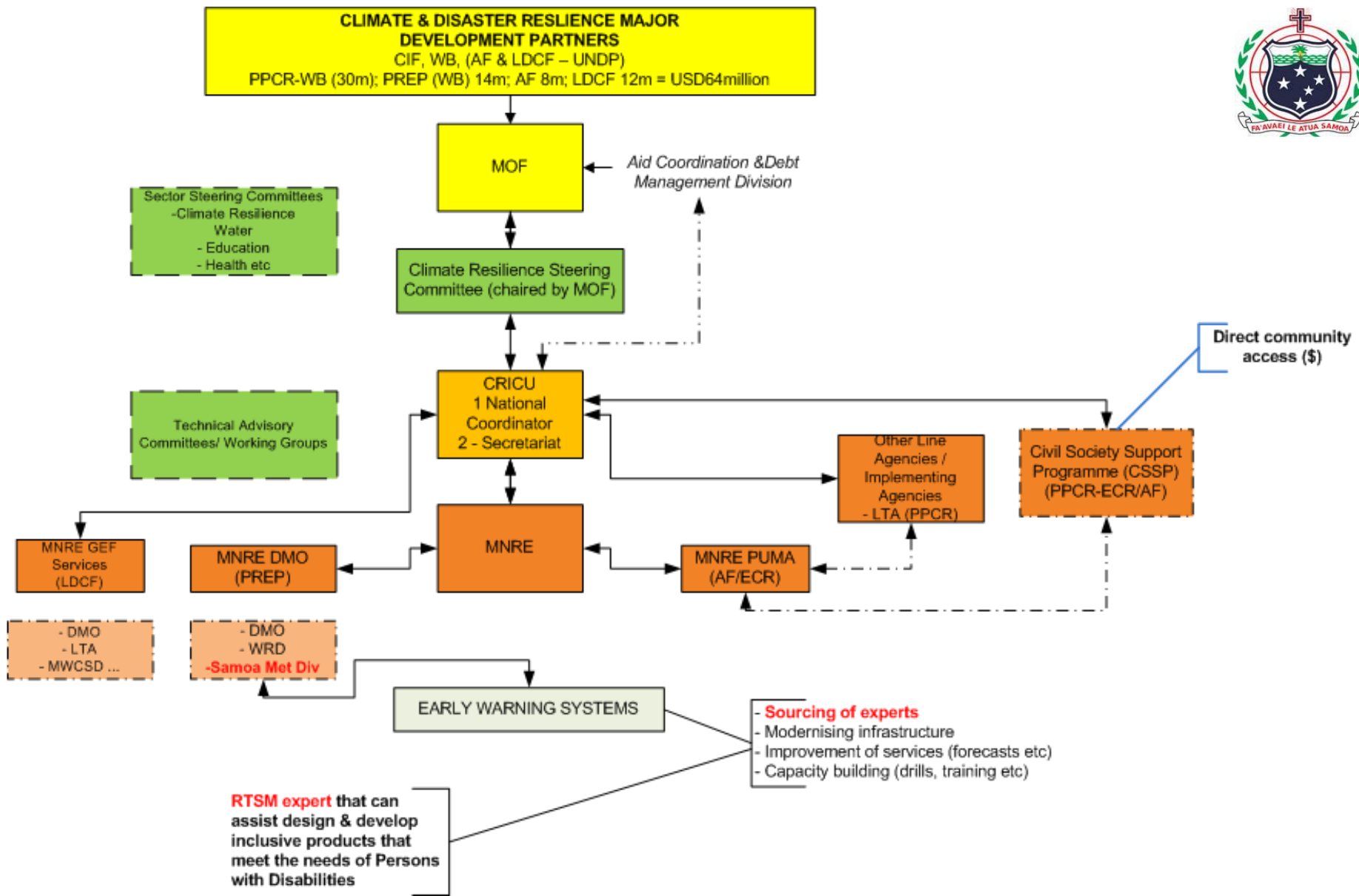


# RTSM/RRF – Potential TA request (Samoa)

Ministry of Finance – Climate Resilience Investment  
Coordination Unit (CRICU)





# SUMMARY

- **Achieve national objectives/indicators in a coordinated manner through mainstreaming of programme project outputs**
- **Deployment of expert not done from a project-oriented approach**
- **Will strengthen capacity of counterpart/implementing agency**
- **Technical assistance should add value and have potential to transform programmes**
- **To ensure the efficient allocation, management and accounting for use of resources**

