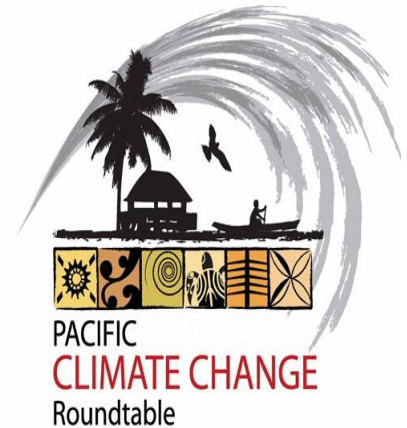




# “Tuvalu NAPA 1: Increasing Resilience of Coastal Areas and Settlements to Climate Change in Tuvalu”



Alan Resture

NAPA 1 National Technical Advisor

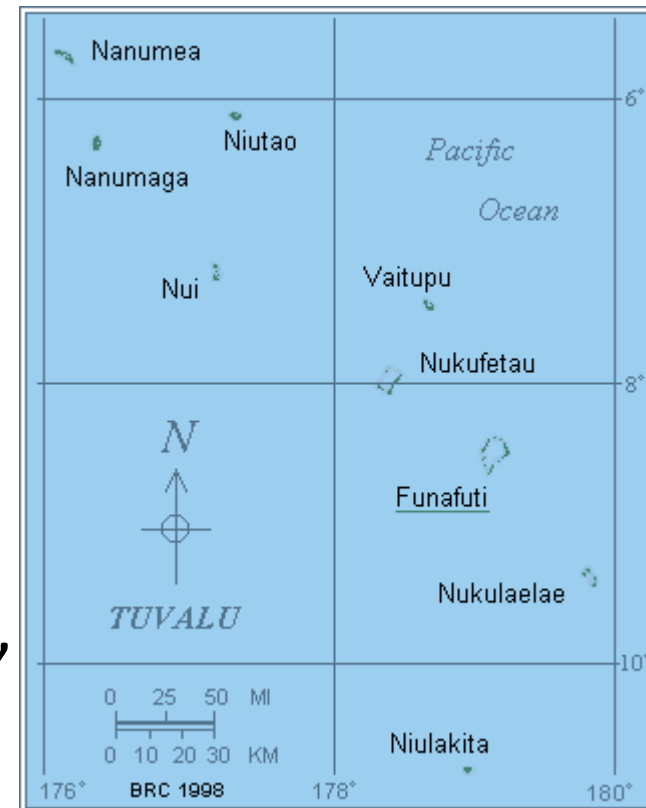
# Presentation Content

1. Nature of the project
2. Achievements
3. Main Challenges
4. Recommendation for future projects



# 1. Nature of the Project

1. First National Adaptation Project that is implemented nation-wide
2. Addresses 3 priority areas
  1. Food Security – Nanumaga, Niutao, Niulakita
  1. Water Security – Nanumea, Vaitupu, Nui, Nukulaelae
  1. Coastal Protection – Nukufetau, Funafuti, Nanumea



# Major Achievements

- **Food security:** Completion of 87 salt-tolerant concrete swamped taro gardens, and assistance given to 728 families for home gardens
- **Water Security:** Enhancement of water retention capacity of more than 1,000 cubic metres
- **Coastal protection:** Planting of more than 1000 coastal tree plants along coastal areas in all nine islands of Tuvalu

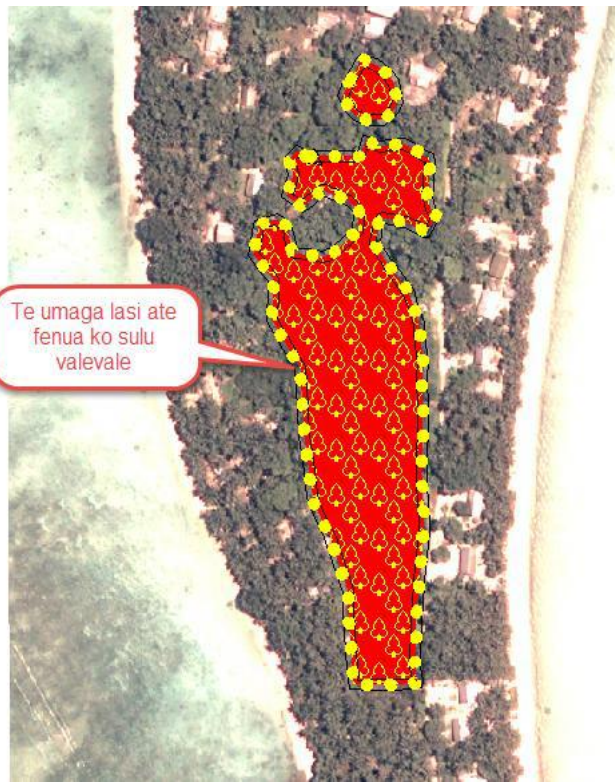




# Main Challenges



Vulnerability of all islands in Tuvalu to TC Pam.



1. Shortages of materials
2. Delays and irregular shipment
3. Communication breakdown



# Recommendation for future projects

1. Proper consultations with Stakeholders is essential at the planning stage of the project to seek their support and engagement
2. Transportation arrangements need to be effective and efficient to avoid unnecessary delays in shipment of project materials.
3. Communication of project progress to senior management and Cabinet is essential to ensure that there is political support.
4. There needs to be a succession of adaptation projects in the region. E.g., NAPA 2 to ensure sustainability of adaptation activities

