

A



ANGELFISH

B



BANANA

C



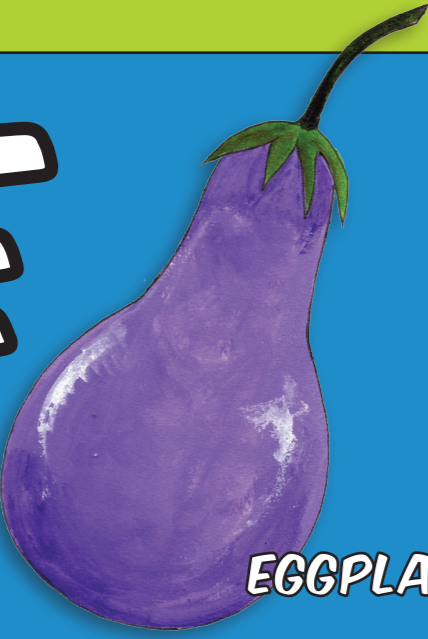
COCONUT

D



DRAGONFLY

E



EGGPLANT

F



FROG

G



GOSHAWK

H



HIBISCUS

I



IGUANA

J



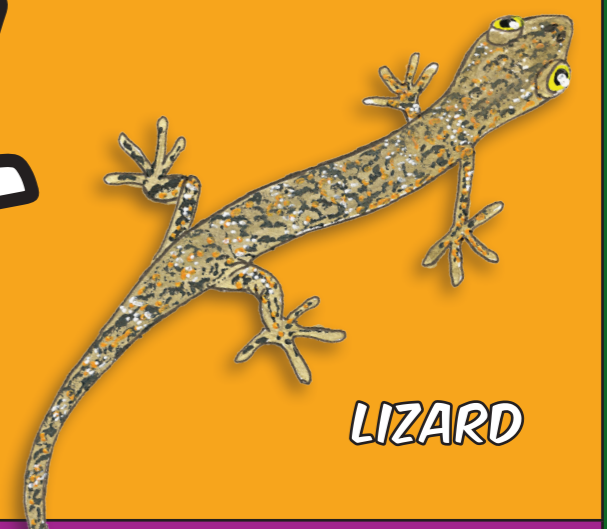
JACKFRUIT

K



KINGFISHER

L



LIZARD

M



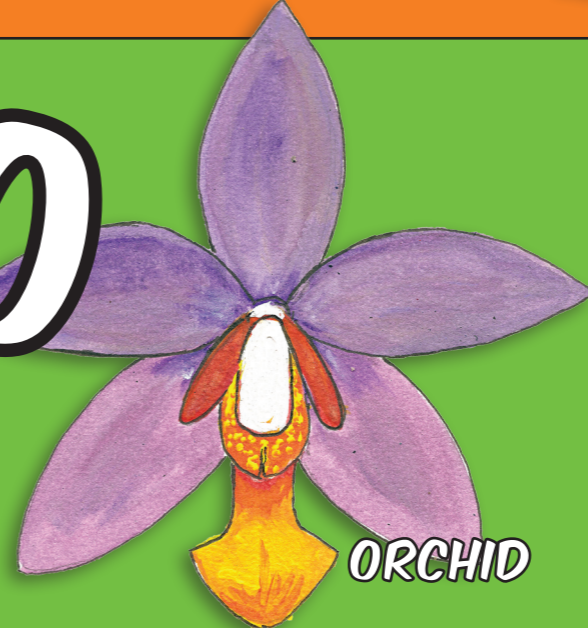
MANGO

N



NAUTILUS

O



ORCHID

P



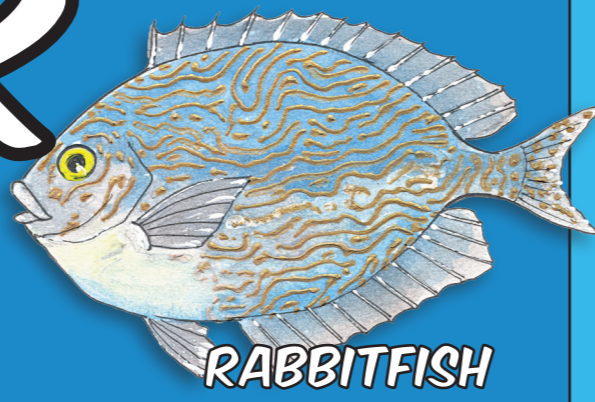
PARROT

Q



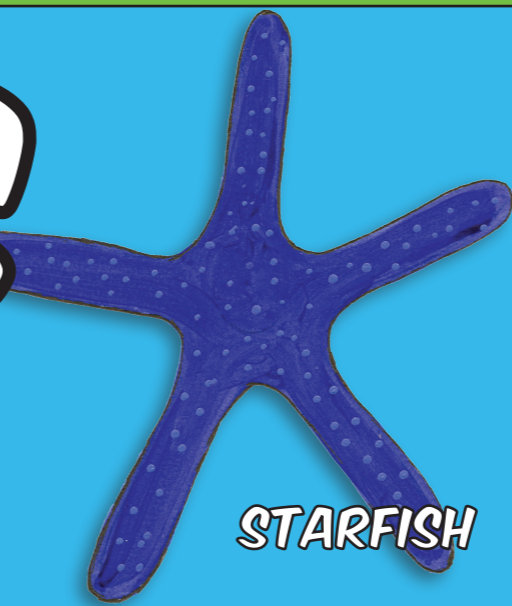
QUAIL

R



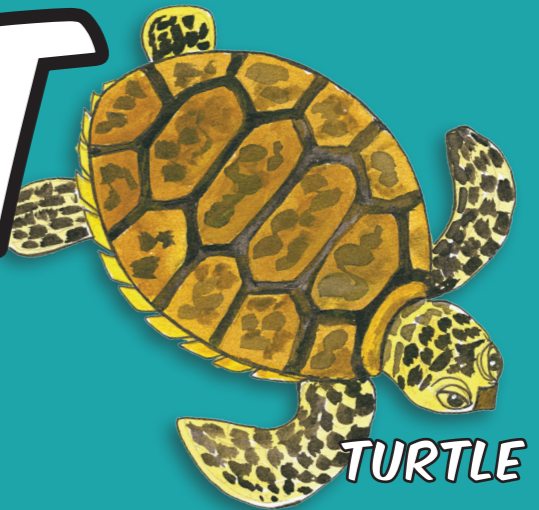
RABBITFISH

S



STARFISH

T



TURTLE

U



URCHIN

V



VANILLA

W



WATERMELON

X



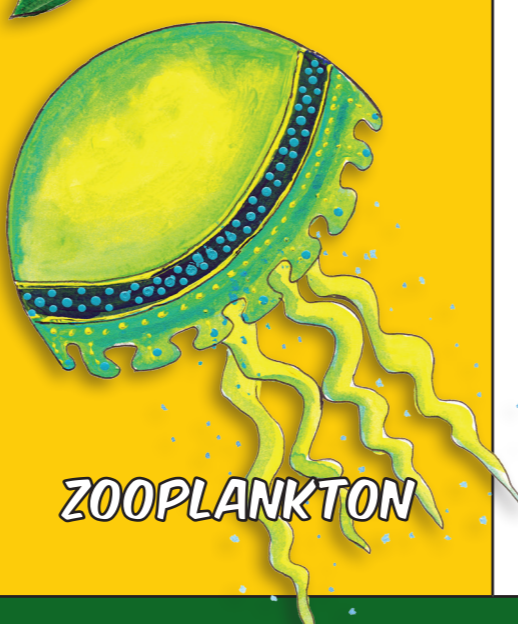
XIXUTHRUS

Y



YAM

Z



ZOOPLANKTON

# THE ALPHABET

BROUGHT TO YOU BY:

