

CLIMATE CHANGE MATTERS

Issue 20 — February 2014



Serua village, Fiji (photo: Carlo Iacovino)

Director's Note	2
About us	2
Climate and Disaster Resilient Development in the Pacific	3
Climate Change Resilience Programme Gets Under Way in the Region	3
What is ecosystem based adaptation?	3
Lightning Data Detection System planned for the Pacific	4
FSM submits first Adaptation Fund project through SPREP	4
Pacific Climate Change Portal joins the Open Knowledge Hub Partnership	5
Locally made water tanks to boost water security in Niue	5
Climate Change Tools to assist with development planning and design	5
Cyclone Ian Heralds Late Start to Cyclone Season	6
Climate update & monthly calendar	7



CLIMATE CHANGE DIVISION

SPREP, Apia, Samoa

T: +685 21929

E: climatechange@sprep.org

W: www.sprep.org

ISSN: 2227-6947

Director's Note



Dr Netatua Pelesikoti

*Climate Change Division Director
SPREP*

Dear Readers,

Greetings from SPREP and the Climate Change Matters team.

We welcome our readers to this, our first CCM release for 2014 and we know that you eagerly await this monthly newsletter!

This year we are dedicated to providing you with all the information, case studies and regional climate change news from SPREP and our partners.

While most of us in the south Pacific are still 'waiting out' this cyclone season we nevertheless carry out our everyday lives and business with an acute awareness of our vulnerabilities to the impacts of climate change and associated disasters, such as experienced by the people Ha'apai in Tonga.

Sadly Ian hit the Ha'apai Group as a category 5 cyclone in January. I was in Ha'apai only a few days earlier with my family. These are the type of hazards and associated impacts we live with in the region - climate related such as Ian, and also geological such as tsunamis.

If there was ever a good time to work even harder to build community and governmental capacity to reduce vulnerability to these hazards - it is now.

SPREP and its partner climate change programmes look forward to playing a role in your country this year and into the future. Climate Change Matters will share these efforts with you every month!

Until then,
Netatua

About Us

SPREP's Climate Change Division (CCD) is made up of three programmes:

1. Adaptation;
2. Mitigation;
3. Policy and Science.

The work of the CCD is directed by the SPREP Strategic Plan 2011-2015 based on the climate change priorities of SPREP Members and consistent with the *Pacific Islands Framework for Action on Climate Change 2006-2015 (PIFACC)* and other relevant and approved policy drivers such as the Pacific Plan and the Framework for Action on Disaster Risk Management.

SPREP's three (broad) climate change strategic priorities for 2011-2015 are:

1. Implementing adaptation measures;
2. Improving members' capacity, knowledge and understanding of climate change, and risk reduction;
3. Contributing to global greenhouse gas reduction.

Please visit our website at:

www.sprep.org/Climate-Change/climate-change-about-us

Climate and Disaster Resilient Development in the Pacific

An invitation to provide feedback on the new strategy

On behalf of the SRDP Technical Working Group, we would like to invite you to provide your feedback on the new Strategy for Climate and Disaster Resilient Development in the Pacific (SRDP).

The SRDP is at the forefront of the region's efforts to take a lead role globally in addressing climate change and disaster risk management in a more integrated manner.

It will succeed the two existing regional frameworks which expire in 2015: the Pacific Disaster Risk Reduction and Disaster Management Framework for Action (RFA) and the Pacific Islands Framework for Action on Climate Change (PIFACC).



For more information: [Click here](#)

Climate Change Resilience Programme Gets Under Way in the Region



PPCR inception meeting participants.
SPREP, Samoa, Jan 2014

The Pilot Program for Climate Resilience (PPCR) is a global initiative aimed at supporting countries to transform to climate resilient development paths consistent with national poverty reduction and sustainable development goals.

"The technical assistance from ADB and SPREP will focus on the priority food and infrastructure areas of selected Pacific countries."

Marilou Drilon, Senior Natural Resources Economist
Asian Development Bank (ADB)

For the full article: [Click here](#)

For more information please contact:

Andrea Volentras
PPCR Programme Manager
andrea.v.ext@sprep.org



What is ecosystem based adaptation?

Ecosystem based adaptation (EbA) provides natural solutions that build our resilience to climate change. Having a healthy environment around us also secures our supply of freshwater, food and other natural resources

"Natural solutions must be a key front line response to climate and many of the other challenges facing our region."

David Sheppard
SPREP Director-General

For the full article: [Click here](#)



Ridge to reef planning can feature in EbA approaches

Lightning Data Detection System planned for the Pacific



Samoan stakeholders take part in the planning of Lightning Detection Data System for the Pacific

Finnish Meteorological Institute (FMI) Expert, Mr. Antti Makela, was in Apia from 20 to 24 January 2014 for a planning meeting with SPREP and the World Meteorological Organization (WMO) to establish a lightning data detection system for the Pacific.

The planning meeting is part of the activities implemented through the FINPAC (Finnish-Pacific) Project. Feedback from SPREP, WMO and stakeholders from Samoa, who were representing potential end user groups from the public and private sector, was sought to help develop an information paper on this system for the Pacific.

Lightning data does not exist in the Pacific particularly in the 14 countries of FINPAC. Having access to the data is therefore the first and crucial step in the process.

The project plans to set up a direct data feed to five National Meteorological Services (NMS), namely Fiji, Samoa, Solomon Islands, Tonga, and Papua New Guinea. Web-based products will be made available for the rest of the Pacific countries which are part of FINPAC.

The FINPAC Project is funded by the Government of Finland



For more information please contact:

Neville Koop
Meteorology/Climatology Adviser
nevillek@sprep.org



FSM submits first Adaptation Fund project through SPREP

On 12 November 2013, SPREP was accredited as a Regional Implementing Entity (RIE) of the Kyoto Protocol Adaptation Fund (AF). Subsequently the Director General issued a general call to all Pacific island countries to submit concepts or proposals for transmission to the AF through SPREP.

Working with the Pacific Adaptation to Climate Change (PACC) project, the Federated States of Micronesia (FSM) produced a highly detailed proposal entitled "Enhancing the Resilience of Vulnerable Island Atoll Communities in FSM to Climate Change Risks Through a "Living with the Sea" National Risk Management Framework".

The project has been endorsed by the Designated National Authority of FSM, Secretary of Foreign Affairs, Mr Lorin Robert, and submitted in time for the deadline of 17 January 2014.

The project will adopt a ridge-to-reef approach, building on the lessons learned from the PACC project in Kosrae State, and apply these to the other three states of FSM – Chuuk, Pohnpei and Yap. The main focus will be on the outer islands and atolls of these states.

"We are very happy to be able to submit this project through SPREP, and are grateful for the assistance provided by SPREP and the consultant to our team here in FSM."

Mr Andrew Yatilman, Director of the Office of Environment and Emergency Management

SPREP encourages other Pacific island countries to submit their concepts in time for the next deadline, which is yet to be confirmed.



For more information please contact:

Espen Ronneberg
SPREP Climate Change Adviser, SPREP
espenr@sprep.org

Pacific Climate Change Portal joins the Open Knowledge Hub Partnership

“One of the key benefits of this partnership for the Pacific is that the Pacific Climate Change Portal will receive seed funding to carry out the information sharing activities discussed at the Hub partnership.”

Makelesi Gonelevu
Knowledge Management Officer

The Pacific Climate Change Portal was selected for the Open Knowledge Hub Partnership coordinated by the Institute of Development Studies, University of Sussex.

Partners to the UKAid funded Electronic Development and Environment Information System Open Knowledge Hub project are: International Initiative for Impact Evaluation Caribbean Community Climate Change Centre Practical Action Latin America Regional Office GDNNet, Indira Gandhi Institute of Development Research Philippines Institute for Development Research, Soul Beat Africa and SPREP.



For more information please contact:
Makelesi Gonelevu
Knowledge Management Officer
makelesi@sprep.org

Locally made water tanks to boost water security in Niue

The future is looking more secure for Niue with the opening of a facility that will allow the nation to produce its own water tanks.

A key output of the Pacific Adaptation to Climate Change (PACC) project in Niue, in partnership with the Global Climate Change Alliance: Pacific Small Island States project, (GCCA PSIS – SPC), the new moulding workshop means that each household on the island will soon have its own water tank.

For the full article: [Click here](#)



Climate Change Tools to assist with development planning and design



New tools to help assess and manage the impacts of high rainfall and high tides were introduced to agriculture officers and engineers from the Land and Water Resource Management Division at a workshop in Fiji in December.

The tools will help them to incorporate complex climate data and climate predictions into their day-to-day decision-making. The workshop was organised by the Pacific Adaptation to Climate Change (PACC) project in partnership with the Fiji Ministry of Agriculture.

For the full article: [Click here](#)

NIWA's Doug Ramsey with
workshop participants

For more information please contact:

Taito Nakalevu
PACC Regional Project Manager
taiton@sprep.com



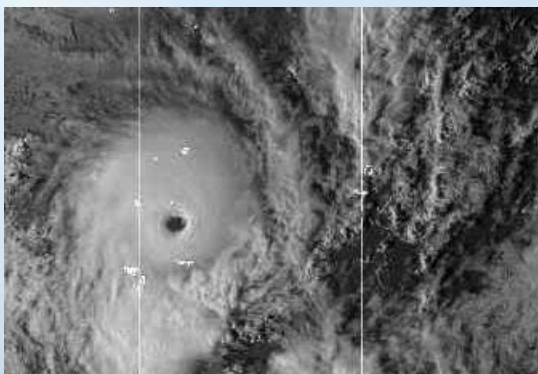
The PACC Project consists of 14 member countries; it is implemented by the United Nations Development Programme (UNDP) in partnership with the Secretariat of the Pacific Regional Environment Programme (SPREP). It is funded by the Global Environment Facility (GEF) and the Australian Agency for International Development with support from United Nations Institute for Training and Research (UNITAR) Climate Change Capacity Development (C3D+) Programme.



Cyclone Ian Heralds Late Start to Cyclone Season

The first tropical cyclone of the season over the south west Pacific region has brought injury and loss of life along with widespread destruction to the Kingdom of Tonga.

Tropical Cyclone Ian was one of the most powerful tropical cyclones to affect Tonga in many decades, reaching Category 5 intensity as it moved across the islands of central Tonga on Friday and Saturday 10th and 11th January.



While the island groups of Ha'apai and Vava'u bore the full force of the cyclone as the eye passed close to both island groups, Tonga's capital, Nuku'alofa, also experienced damaging winds as the cyclone moved southward passing just a few hundred kilometres to the east of Tongatapu and nearby islands.

It will take months, even years, for the local economy to recover from this extreme weather event and those families who have lost homes and livelihoods along with the injury and loss of life will remember this event for a long time.

For the full article: [Click here](#)



For more information please contact:

Neville Koop
Meteorology/Climatology Adviser
nevillek@sprep.org

Events in February 2014

Event	Location	Date
In – Country Assistance: Cook Islands	Cook Islands	3-7 Feb
PIFACC Monitoring & Evaluation Workshop	SPREP, Samoa	10-11 Feb
APAN Workshop	SPREP, Samoa	12 Feb
SPREP Climate Change Division Planning Meeting	Samoa	13-14 Feb
In-Country Assistance: 3rd Joint Mission to Abaiang, Kiribati	Kiribati	16-23 Feb
Workshop on Project Proposal Development Using the Logical Framework Approach	Tonga	17-21 Feb
WACC Meeting	Fiji	17 or 20 Feb
APAN Networking and SC Meeting	Thailand	18-22 Feb
In-Country Assistance: Tuvalu PACC Project	Tuvalu	24-27 Feb
SIDS 2014 Preparatory Conference	USA	24-26 Feb
Samoa and Tokelau – National Consultation on the Integrated Strategy	Samoa	26 Feb
11th EDF Regional Programming Seminar and Consultations	Fiji	27 Feb